

PATROL

Year
2021

Chair

Designer
András Kerégyártó



PLYDESIGN

The PATROL chair is an economic alternative, offering a high level of flexibility and durability for its value. The set-up of the chairs is simple: legs are held to the shell by 8 screws and are easily detachable for economical transport. The robust, 5-point mounting system reduces the torsional forces on the plywood X-legs.

Dimensions:

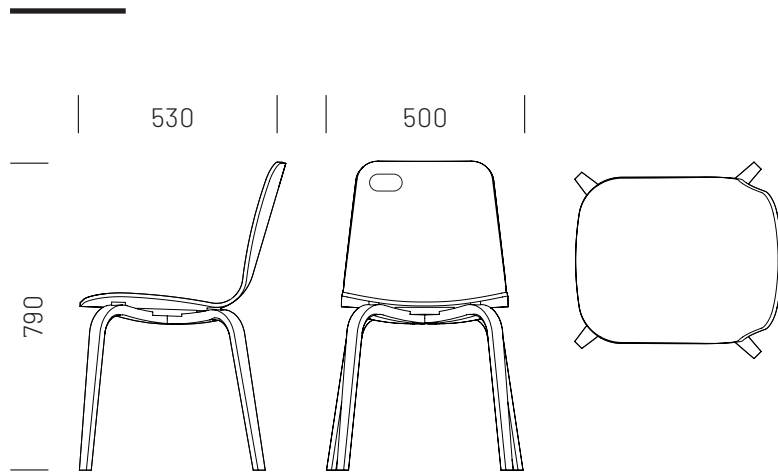
530 × 500 × 790 mm (L × W × H)

Seat height: 440 mm

Seat width: 413 mm

Seat depth: 435 mm

Weight: 4,6 kg

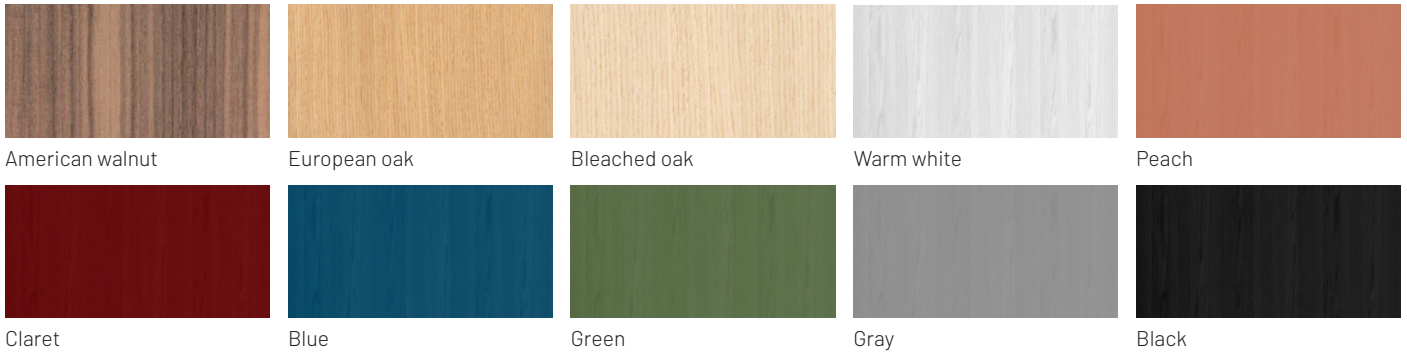


Certificates:

Stability and safety:
MSZ EN 1728:2013
MSZ EN 12520:2016
MSZ EN 16139:2013 (L1)



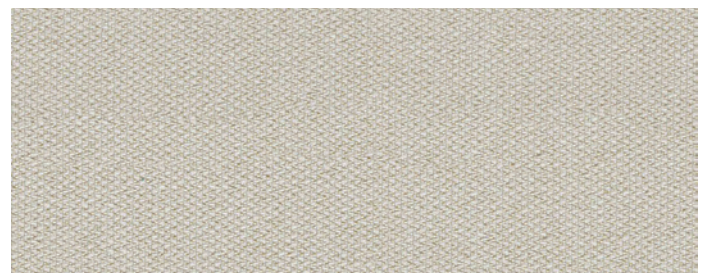
Material &
colour options



UPHOLSTERY – CAMIRA FABRICS

ERA

Designed by Penny Lovatt and
recoloured by Morwenna
Fallows



CSE01

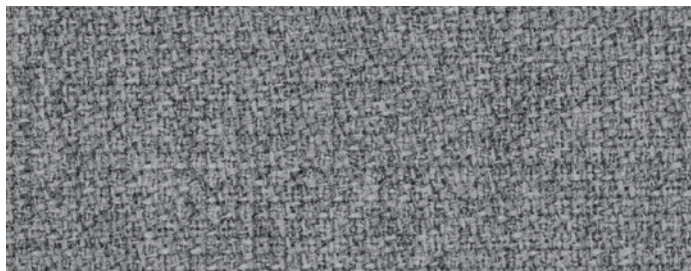


COMPOSITION	DURABILITY	LIGHTFASTNESS	PILLING	FLAMMABILITY*	ENVIRONMENT
100% Polyester. Non metallic dyestuffs	≥ 100.000 Martindale	5	Dry: 4 Wet: 4	EN 1021 - 1 (cigarette) EN 1021 - 2 (match) BS 7176 Low Hazard	OEKO-TEX® Standard 100 Indoor Advantage™ „Gold“

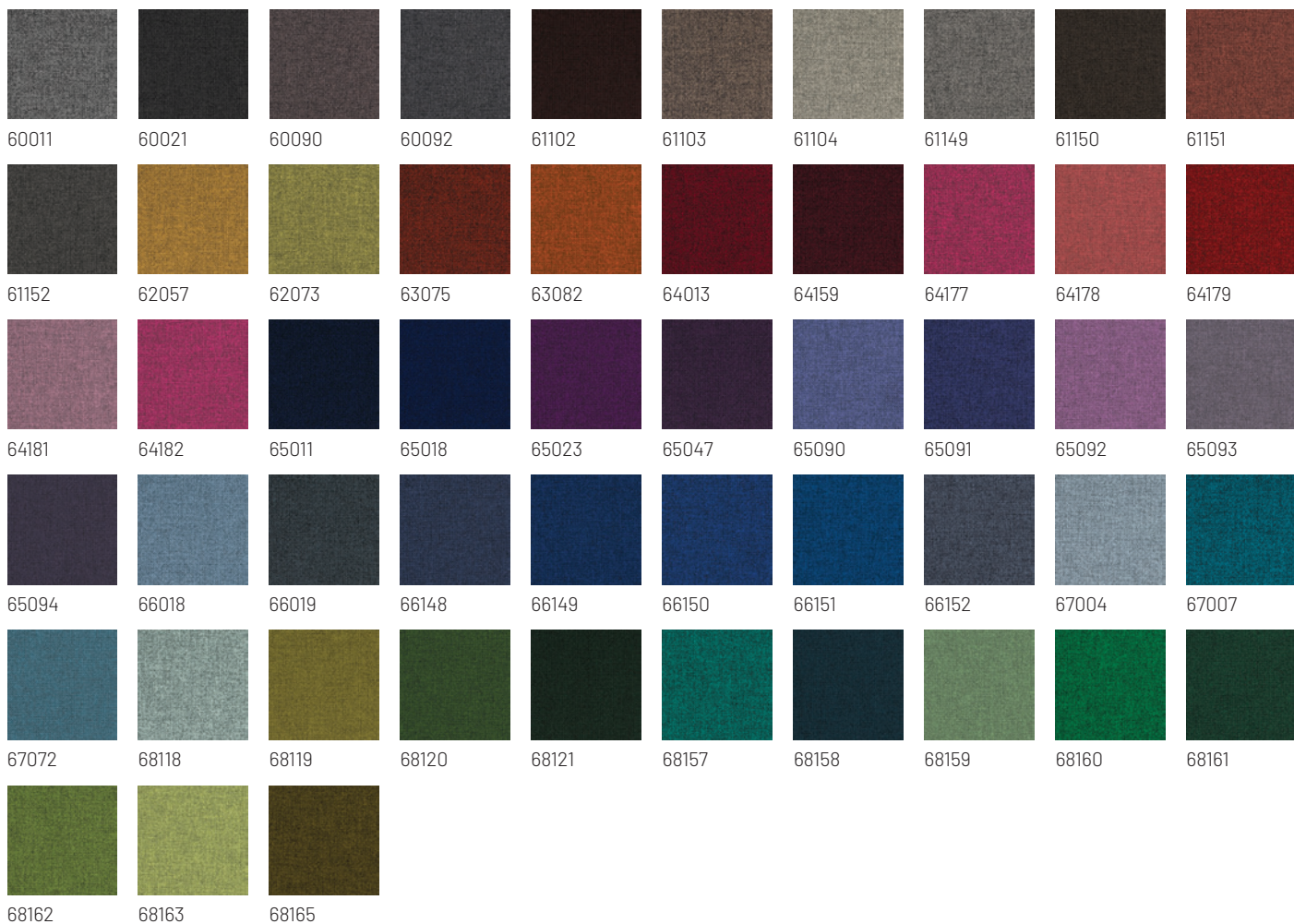
* Find more information at camirafabrics.com

STEP MELANGE

Designed by Inger Mosholt Nielsen



60004



COMPOSITION	DURABILITY	LIGHTFASTNESS	PILLING	FLAMMABILITY*	ENVIRONMENT
100% Trevira cs	100.000 Martindale	5-7	4-5	IMO MSC 307(88) Annex 1 part 8 MED Certificate IMO IMO MSC 307(88) Annex 1 part 8 UK	STANDARD 100 by OEKO-TEX® EU Ecolabel

* Find more information at gabriel.dk

ULTRA



41598



41599 41590 41573 41580 41575 41597 41589 41588 41585 41586
 41584 41576 41583 41582 41581 41594 41593 41579 41578 41574
 41587 41592 41571 41572 41566 41570 41569 41568 41567

COMPOSITION	LIGHTFASTNESS	PILLING	FLAMMABILITY*	ENVIRONMENT
Protected leather	6-7	Dry: 4-5 Wet: 4	BS EN 1021-1 and 2 CA TB 117-2013	Free of chrome VI

*Find more information at sorensenleather.com