

# FRIGATE

---

Year  
2017

Chair

Designer  
**András Kerégyártó**



PLYDESIGN

The chair's shell consists of two components: the backrest is made with the aid of 3D-Veneer technology, while the seat pan is produced through conventional moulded plywood process. The backrest, curved in all dimensions, provides an ideal support for the waist, along with its upper part and seat pan where the edges are bent in the opposite direction of the body in order to avoid cutting into the back and the thighs. The combination of old and new technologies enables us to offer an optimal seating comfort as other seats made entirely with 3D-Veneer, while making it available for a much wider audience. The sublime silhouettes counterbalance the sturdy character of FRIGATE which is designed to withstand the course of time.

Dimensions:

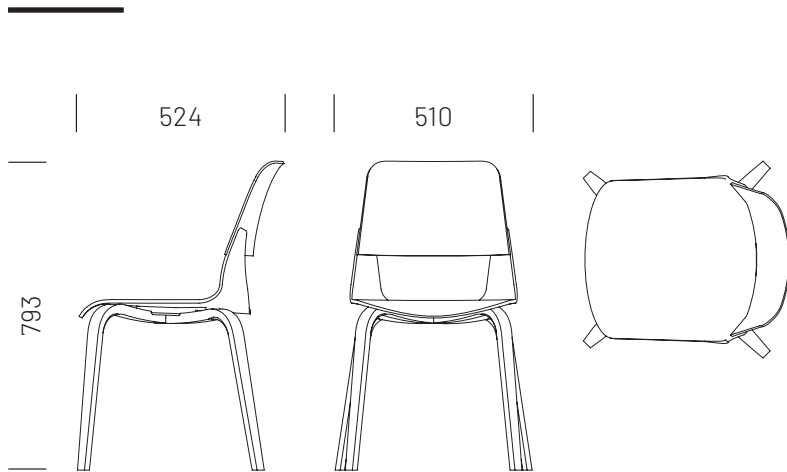
524 × 510 × 793 mm (L×W×H)

Seat height 440 mm

Seat width 413 mm

Seat depth 435 mm

Weight: 4,1 kg



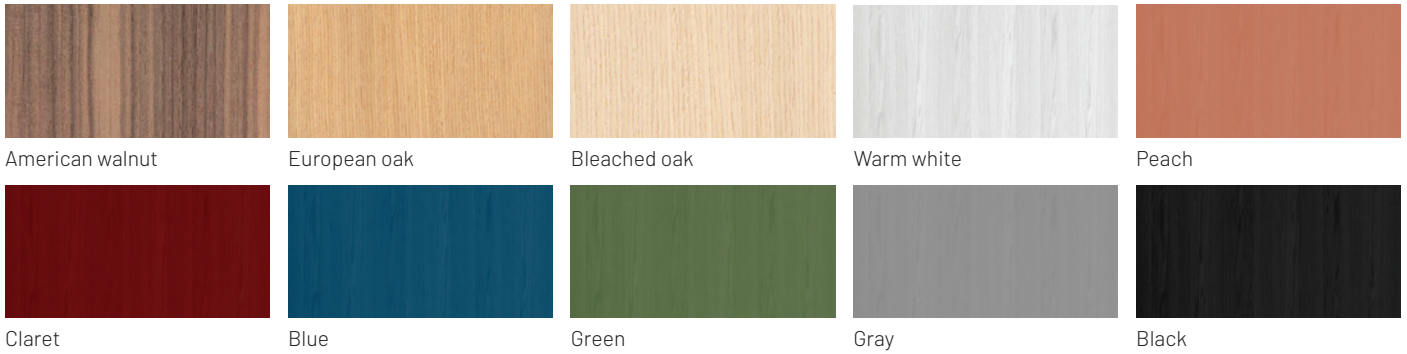
**Certificates:**

Stability and safety:  
MSZ EN 12520:2016  
MSZ EN 16139:2013

Surface resistance:  
EN 12720:2009+A1:2013  
SIS 83 91 17 2) or EN 15186 3)  
EN 12722:2009+A1:2013  
EN 12721:2009+A1:2013  
NS 8061  
EN ISO 105-E04:2013



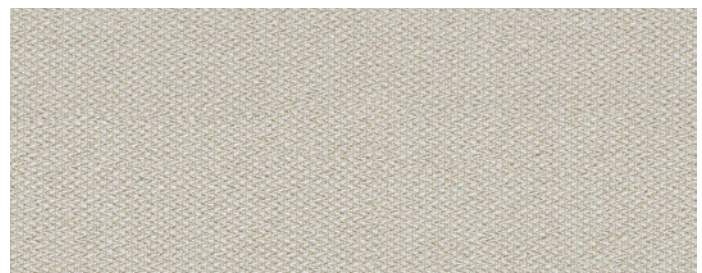
**Material &**  
*colour options*



UPHOLSTERY – CAMIRA FABRICS

ERA

Designed by Penny Lovatt and  
recoloured by Morwenna  
Fallows



CSE01

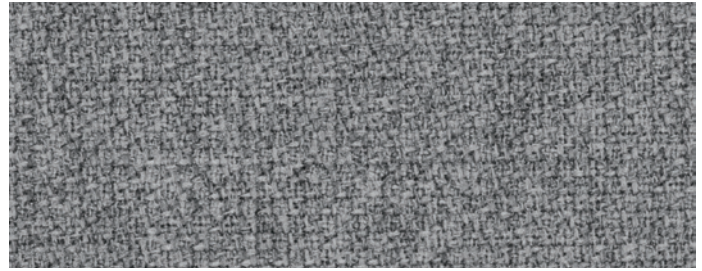


COMPOSITION	DURABILITY	LIGHTFASTNESS	PILLING	FLAMMABILITY*	ENVIRONMENT
100% Polyester. Non metallic dyestuffs	≥ 100.000 Martindale	5	Dry: 4 Wet: 4	EN 1021 - 1 (cigarette) EN 1021 - 2 (match) BS 7176 Low Hazard	OEKO-TEX® Standard 100 Indoor Advantage™ „Gold“

\* Find more information at [camirafabrics.com](http://camirafabrics.com)

**STEP MELANGE**

*Designed by Inger Mosholt Nielsen*



60004



COMPOSITION	DURABILITY	LIGHTFASTNESS	PILLING	FLAMMABILITY*	ENVIRONMENT
100% Trevira cs	100.000 Martindale	5-7	4-5	IMO MSC 307(88) Annex 1 part 8 MED Certificate IMO IMO MSC 307(88) Annex 1 part 8 UK	STANDARD 100 by OEKO-TEX® EU Ecolabel

\* Find more information at [gabriel.dk](http://gabriel.dk)

ULTRA



41598



41599 41590 41573 41580 41575 41597 41589 41588 41585 41586  
 41584 41576 41583 41582 41581 41594 41593 41579 41578 41574  
 41587 41592 41571 41572 41566 41570 41569 41568 41567

COMPOSITION	LIGHTFASTNESS	PILLING	FLAMMABILITY*	ENVIRONMENT
Protected leather	6-7	Dry: 4-5 Wet: 4	BS EN 1021-1 and 2 CA TB 117-2013	Free of chrome VI

\*Find more information at [sorensenleather.com](http://sorensenleather.com)